

**Prince Georges Avenue
Raynes Park, SW20 8BH**

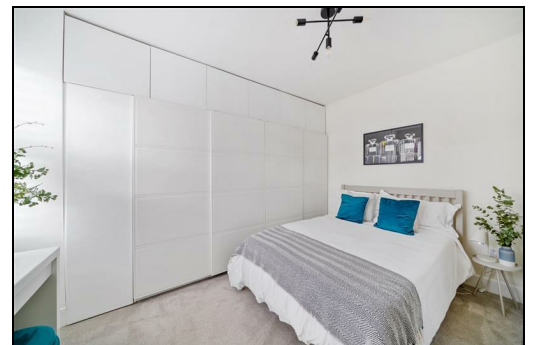
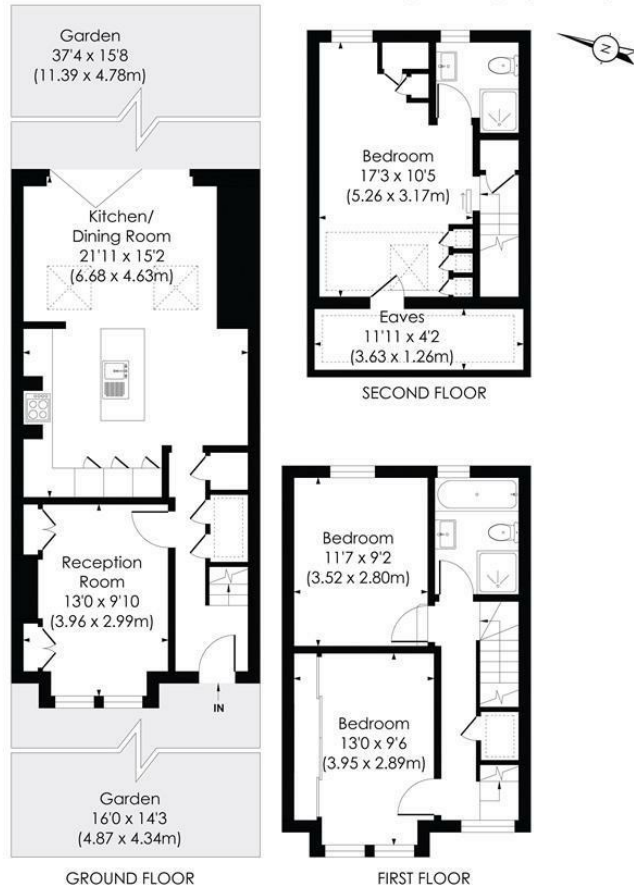
£975,000 Freehold



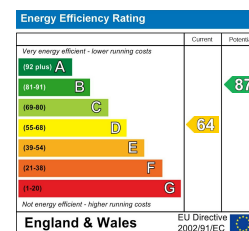
This fantastic 1,152 sqft THREE DOUBLE BEDROOM, TWO BATHROOM, fully Extended Edwardian Apostle House has been tastefully finished throughout and is perfectly located only 0.4 Miles to Raynes Park Station and High Street. There is a stunning open plan kitchen/dining/family room with quartz worktops, integrated appliances and large sliding doors that lead on to a landscaped rear garden, a charming separate front reception room with plantation shutters, an entrance hall with under stairs storage, two tastefully finished double bedrooms on the first floor, a modern family bathroom and an extended master bedroom with built in wardrobes and a fabulous en suite shower room.

PRINCE GEORGE'S AVENUE, SW20

Approx. Gross Internal Floor Area
1152 Sq. ft/107.02 Sq. m (Incl. RHH)
1060 Sq. ft/98.49 Sq. m (Excl. RHH)



- Three Double Bedroom - Two Bathroom - 1,152 sqft
- Fully Extended Edwardian Apostle House
- Stunning Open Plan Kitchen/Dining/Family Room
- Sliding Doors, Quartz Worktops, Landscaped Garden
- Spacious Master Bedroom With En Suite Shower Room
- Charming Separate Front Reception Room With Shutters
- Popular Tree-Lined Residential Road
- 0.4 Miles To Raynes Park Station And High Street
- EPC - D
- Council Tax Band - D



For Free Mortgage Quote and Best Mortgage Rates, call Ellisons Mortgage Advisor on 0208 944 9595



Although these particulars are believed to be correct, their accuracy is not guaranteed and they do not form part of any contract.

Celebrating 30 years of successful Sales and Lettings in Merton

